

# ENGLISH SUMMARY OF PILOT PROJECT

## Planning Phase

**Project /Title:** Forest Park Renewal

**Site (region/city or town):** Brno – Nový Lískovec, city district of Brno city, Czech republic

### 1. Short Description of the area (add some photo):

Revitalization of a former forest park to establish a new leisure and daily recreation facility in city district for local community as well as for inhabitants of the whole city area. The forest park site is situated in attractive landscape setting surrounded by several residential districts with population of 50.000 and newly developed large university campus nearby. Forest park renewal creates attractive green leisure area for Novy Liskovec, other adjacent city districts and whole Brno area.

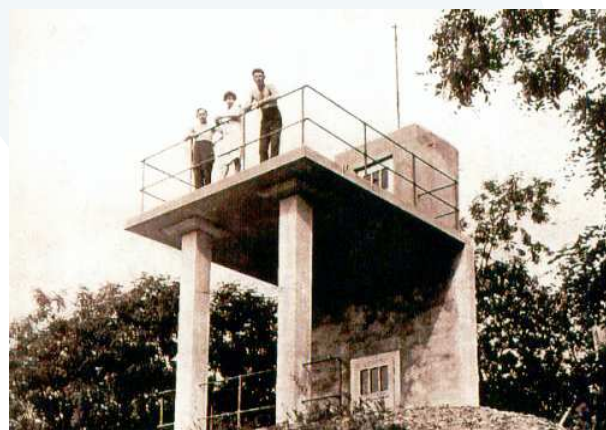


Photo of outlook tower (1928)



Photo of devastated outlook tower (2010)

Before the World War II the forest park used to serve for recreation, linked to former nursing home. After that, several decades without maintenance all the facilities and greenery became totally neglected and the forest park got abandoned.

### 2. Design characteristics (add some pictures and photos)

Renewal contains restoring the paths network, green features, watter system and installation equipment for both walking and fitness together with outlook tower renovation in contemporary architectonic interpretation.

There is included the paths and routes, open air amphitheatre, furniture, benches, bins, signage. Watter system reconstruct old park pool with spring imitation and build new supply system with new well (old one was unusable).





New contemporary architectonic interpretation of forest park



Photo of general greenery renewal - started in 2009



### 3. The transnational aspect

Urban spaces renewals have to come up from whole city conception of public spaces – “from wide to local” method.

Both levels (wide and local) of designing should use public participation as a tool of project management.

Public participation in process of local space creation is more successful, when meeting is organized in place of space in open air.

Process of design and realization should follow and keep in mind Joint Strategy measures – see the checklists below in Table 1.

**Table 1:**

Application of the WP 3 Joint Strategy (which measures were implemented and how the checklists and recommendations of the relevant aspects in the planning phase were followed) :

Characteristics	Description of measures:
<b>Environmental aspect</b>	Renewal greenery (cutting down robinia trees), right maintenance started, water system - good balance and biodiversity  Evaluation of influence on environment, another opportunity for visit nature beside Nature 2000 preservation
<b>Aspect of public participation</b>	Questionnaire, public meetings - initiated by municipality, but low response by citizens  Meeting with citizens involved to design and work in forest park
<b>Gender aspect</b>	Function of General retreat use – for all
<b>Security and social aspect</b>	Security aspect is difficult to carry – no lightings, many trees, boarder of district, hilly terrain, ...  Social aspect – nice nature open space – relax at high intensity housing area (concrete blocks)
<b>Accessibility aspect</b>	Most part of park is accessible without barriers, not many stairs, hilly terrain - difficult access for wheelchairs and older
<b>Urban design aspect</b>	Space unuseful was changed to useful and attractive  attractiveness – nature, walk paths, walk tour lines through park, water point, nice lookouts, lookout-tower, park furniture, orientation signage  balance conception of space



